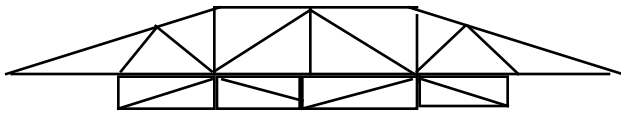


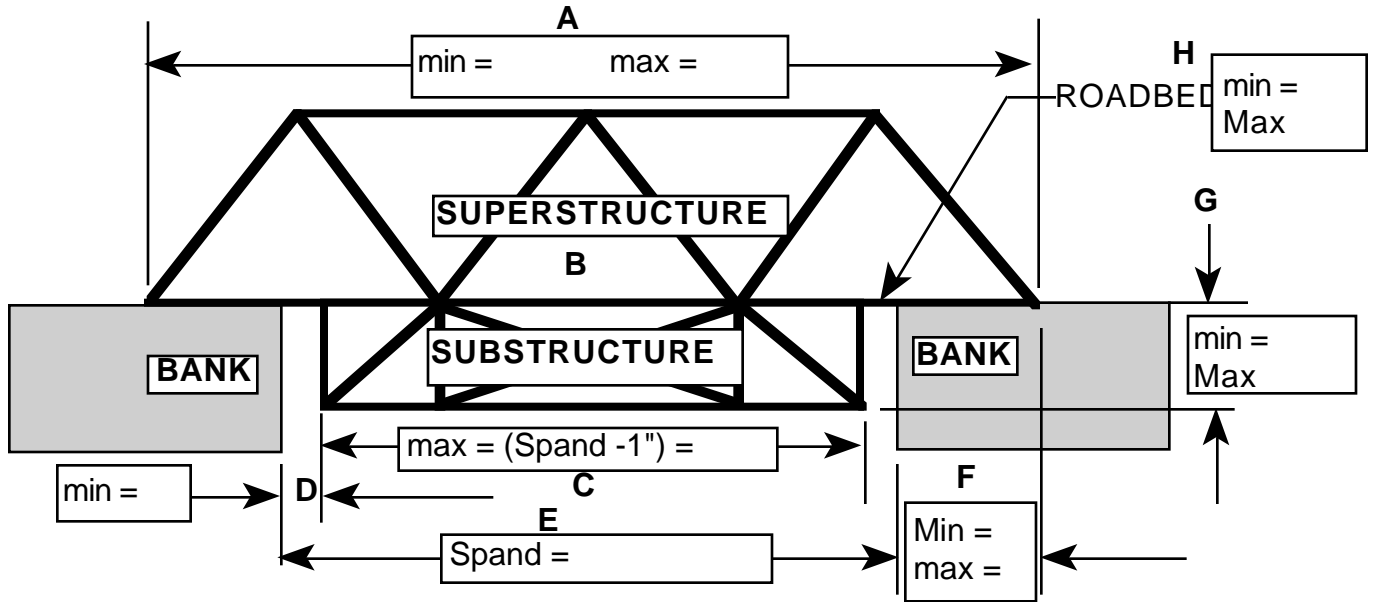
BRIDGE BUILDING



NAME _____
 / /
 DATE _____ STUDENT NO. _____

PLACE THE MEASUREMENTS THAT YOU MUST USE IN DESIGNING YOUR BRIDGE

- A. THIS IS THE OVERALL LENGTH THAT THE BRIDGE MUST BE . NO LONGER AND NO SHORTER.
- B. YOU CAN LAMINATE ONLY TWO PIECES OF WOOD.
- C. THIS IS THE MAX. THAT THE LENGTH OF THE SUBSTRUCTURE CAN BE. MIN. = 0”.
- D. THIS IS THE MINIMUM DISTANCE FROM THE BANK.
- E. THIS IS THE DISTANCE FROM ONE BANK TO THE OPPOSITE BANK THE SPAN.
- F. THIS IS THE MAXIMUM DISTANCE THAT THE BRIDGE CAN COVER THE ROADBED.



- G. THE SUBSTRUCTURE CANNOT EXTEND BELOW THE ROADBED THIS MUCH.
- H. THE ROADBED CAN BE NO HIGHER THAN THIS.
- I. THE TRUSS BRIDGE THAT YOU CONSTRUCT MUST HAVE A STRAIGHT ROADBED.
- J. YOU MUST DESIGN AND BUILT ONLY A TRUSS BRIDGE.
- K. YOU MAY USE INDEX CARD GUSSETS THAT WHEN CUT OUT WILL FIT INSIDE THE CIRCLE OF A QUARTER.
- L. THIS IS THE MAXIMUM AND MINIMUM DISTANCE THAT THE INSIDE WIDTH OF THE ROADBED CAN BE . MIN = MAX =
- M. YOU MUST LEAVE A SQUARE INCH SPACE IN THE MIDDLE OF THE ROADBED AND SUBSTRUCTURE. THIS IS FOR THE BOLT THAT IS USED TO TEST YOUR BRIDGE.

25¢

YOU ARE AN ENGINEER IN THE MIDDLE OF A DESERTED AREA OF THE WORLD WITH A LIMITED SUPPLY OF BUILDING MATERIAL, EQUIPMENT AND TIME. YOU MUST BUILD A TRUSS BRIDGE OVER THE TECHNOLOGY RIVER
 YOU MUST BUILD A BRIDGE WITH ONLY _____ PIECES OF 1/8” X 1/8” X 24” Balsa wood. THIS GIVES YOU A TOTAL OF _____ INCHES OF Balsa wood.
 YOU MUST DESIGN A BRIDGE THAT WILL NOT USE MORE THAN _____ “ OF Balsa wood.